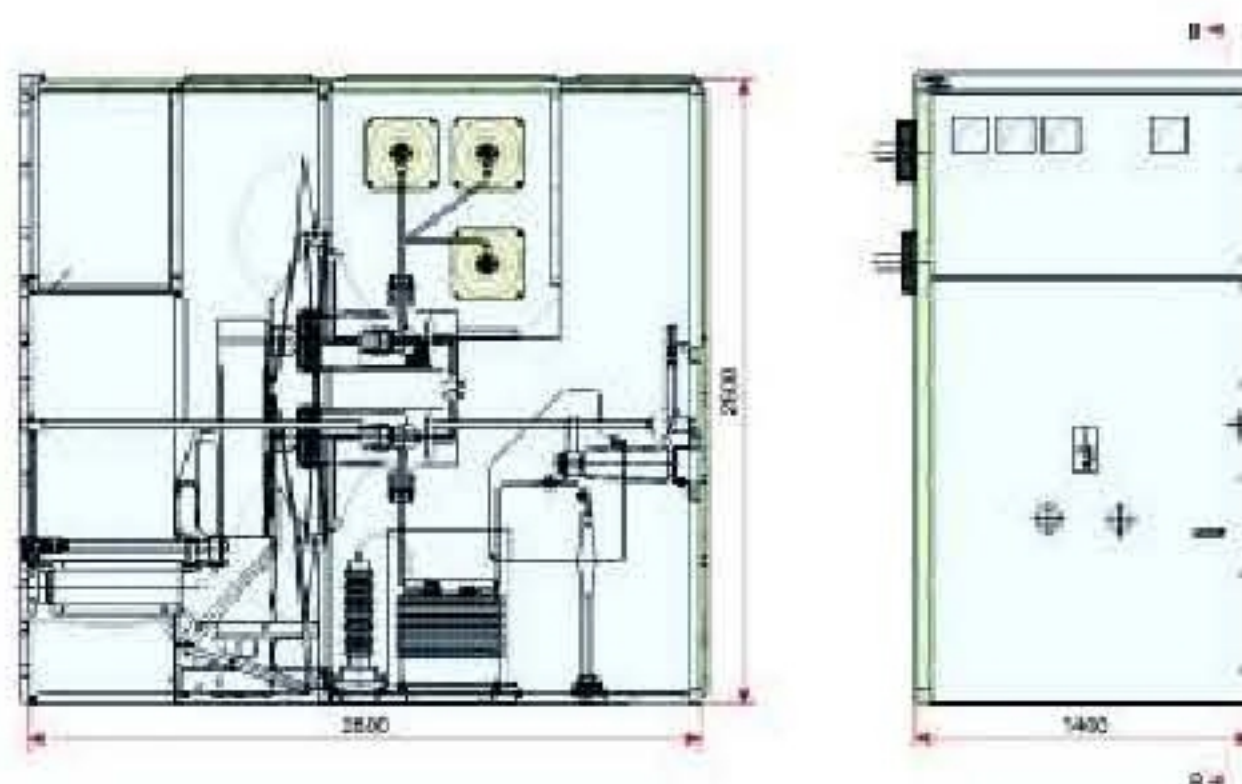




Outline Drawing



General

KYN61-40.5 removable AC metal-clad switchgear (short for switchgear as below) applies to 40.5kV, 3 phase, AC and 50/60Hz electrical power network for receiving and distributing power energy and also for control, monitor and protect ion. It is applicable in general power system and occasions with frequent operation.

The product conforms to GB3906: 3-35kV AC Metal Enclosed Switchgear, IEC60694 & GB/T11022: Common Specifications For High-Voltage Switchgear and Controlgear Standards, as well as IEC62271-200 AC Metal-enclosed switchgear and controlgear for rated voltage above 1kV and below 52kV.

Working Conditions

1. Ambient temperature: -10 ~40℃
2. Altitude: ≤1000m;
3. Relative humidity: daily average ≤95%, monthly average ≤90%;
4. Earthquake Intensity: ≤Magnitude 8;
5. Applicable in the places free of corrosives, inflammables and vapor.

Product Parameter

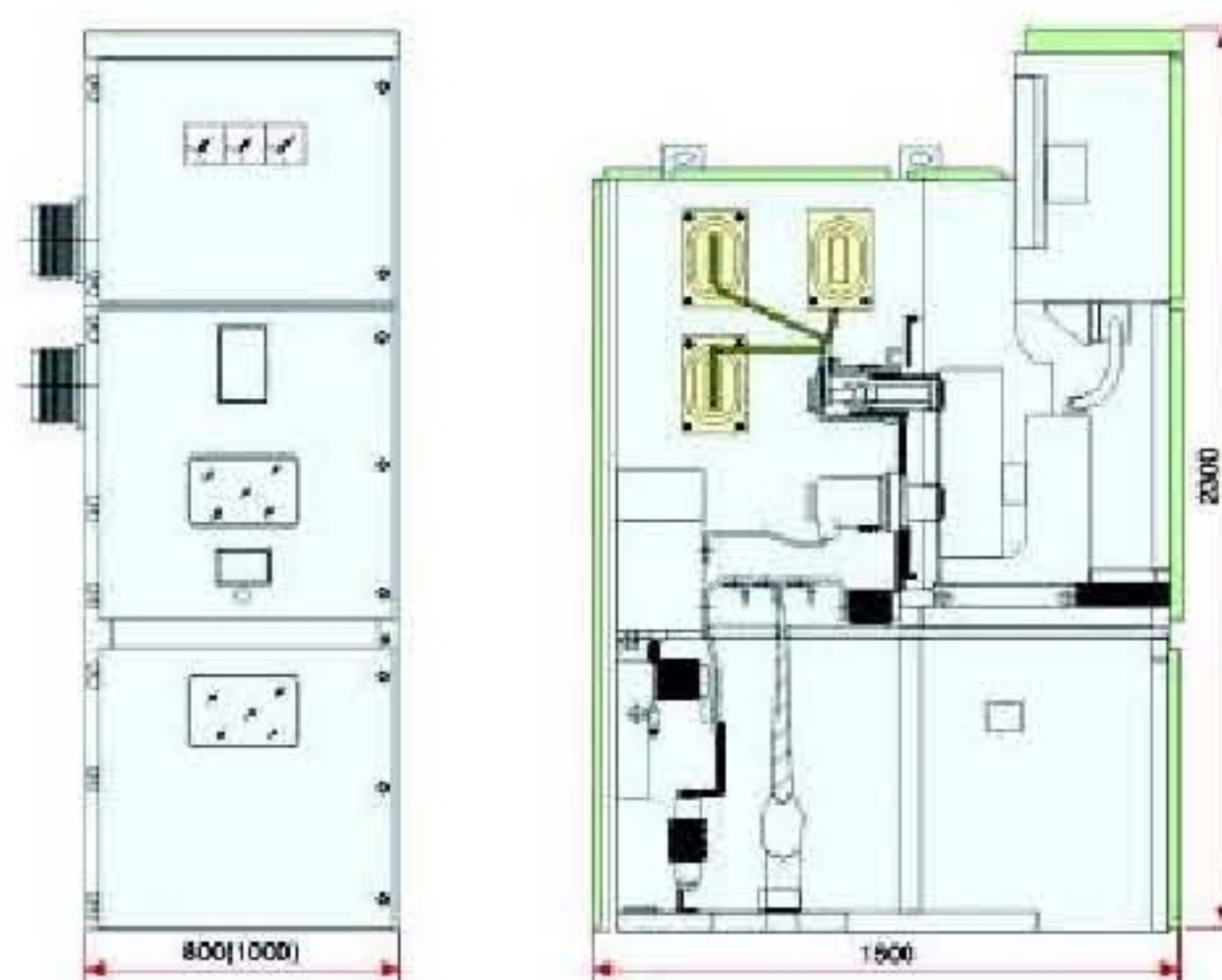
Ser. No.	Item		Unit	Value
1	Rated Voltage		kV	40.5
2	Rated Insulation Level	Lightning Impulse Withstand Voltage	kV	185
		1min power frequency withstand voltage	kV	95
3	Rated Frequency		Hz	50
4	Rated Current		A	1250 1600 2000
5	Rated Short-circuit Breaking Current		kA	25,31.5
6	Rated Short- time Making Current (Peak)		kA	63,80
7	Rated Peak Withstand Current		kA	63,80
8	Rated Short-time Withstand Current(4s)		kA	25,31.5
9	Protection Grade of the Frame		IP3X or IP4X	
10	Overall Dimension (W×D×H)mm	VCB Cabinet	1400x 2800x 2600	
		SF ₆ Circuit Breaker Cabinet	1400x 2950x 2600	
11	Weight of Circuit Breaker Cabinet		Kg	2600
	Weight of Handcart	SF ₆ Handcart		300
		Vacuum Handcart		400

Note: Custom Products are available upon your request.

KYN28A-12(GZS1) Metal Clad Switchgear



Outline Drawing



General

KYN28A-12(GZS1) Withdrawable-type Metal Clad AC Enclosed Switchgear is developed on the basis of advanced technology from abroad, which can replace the out of date metal closed switch cabinet. The switchgear applies 3.6~12kV 3 phase AC 50Hz network to secondary receiving and distribution of power energy and also for control, monitor and protection.

The door applies the spray coating and has high resistance of impulse shock and corrosion. The main switch cabinet can be equipped with the our VS1, or ABB VD4, SIEMENS 3AH Series and GE VB2 vacuum circuit breaker.

It conforms to IEC62271-200 High Voltage Switchgear and controlgear Part 200: AC Metal-enclosed switchgear and controlgear for rated voltage above 1kV and up to and including 52kV; IEC 62271-100: High-voltage switchgear and controlgear Part 100: Alternating-current circuit-breakers; IEC60694 Common Specifications for High-Voltage Switchgear and Controlgear Standards.

Working Conditions

1. Ambient temperature: $-10 \sim -40^{\circ}\text{C}$
2. Altitude: $\leq 1000\text{m}$;
3. Relative humidity: daily average $\leq 95\%$, daily average of water vapor pressure $\leq 2.2\text{Kpa}$
monthly average $\leq 90\%$; monthly average of water vapor pressure $\leq 1.8\text{Kpa}$
4. Earthquake intensity: \leq Magnitude 8;
5. Applicable in the places free of corrosives, Inflammables and vapor.

Product Parameter

Ser. No.	Item		Unit	Value
1	Rated Voltage		kV	3.6; 7.2; 12
2	Rated Insulation Level	1min Power Frequency Withstand Voltage	kV	42
		Lightning Impulse Withstand Voltage	kV	75
3	Rated Frequency		Hz	50
4	Main Busbar Rated Current		A	630; 1250; 1600; 2000 2500; 3150; 4000; 5000
5	Branch Busbar Rated Current		A	630; 1250; 1600; 2000 2500; 3150; 4000; 5000
6	Rated Shorttime Withstand Current (4s)		kA	16; 20; 25; 31.5; 40; 50
7	Rated Peak Withstand Current		kA	40; 50; 63; 80; 100; 125
8	Protection Grade		IP4X for the enclosure, IPX2 when CPT,CB Door Is open	

Note: The technical manual is made separately, please contact us for the profile.
Custom cabinet is available upon your request.