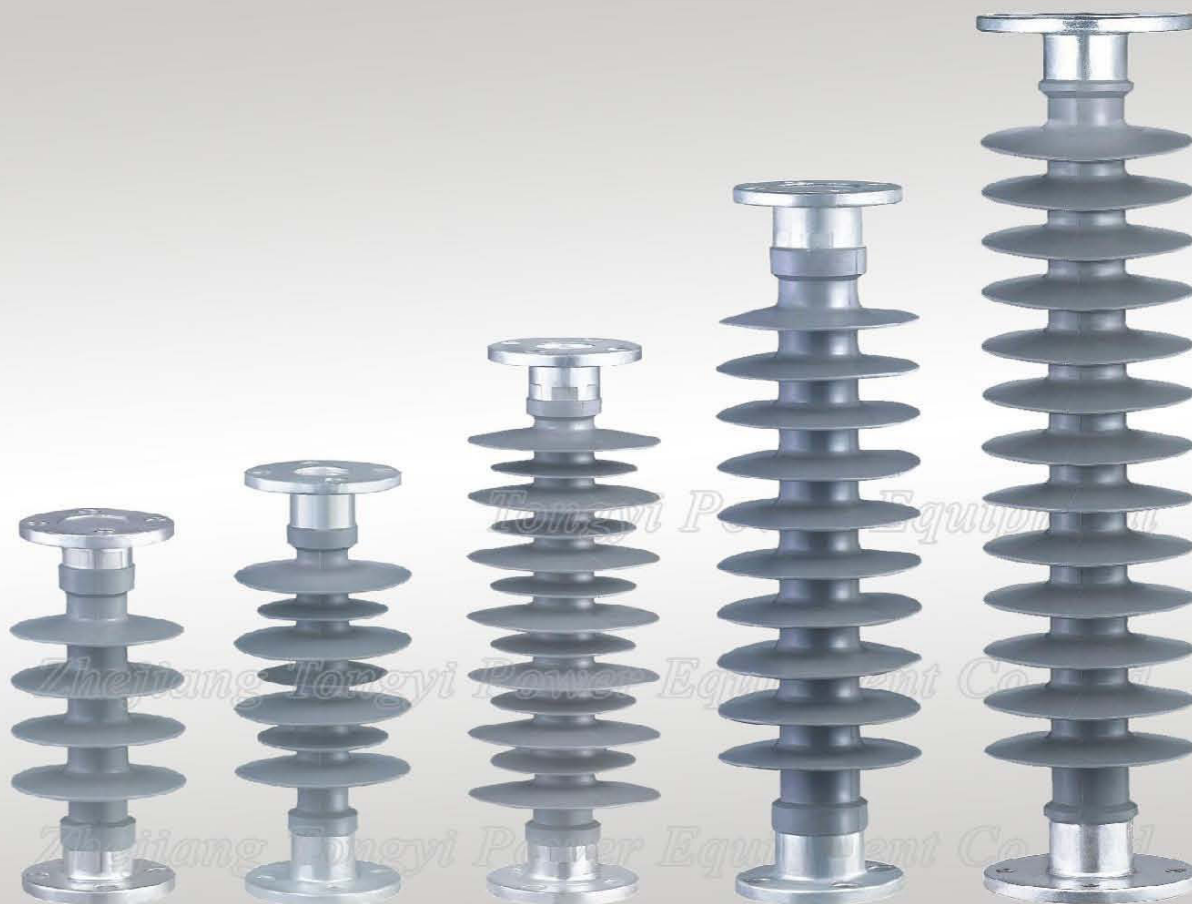


Overhead Lines and Substation
Composite Post Insulators
for Power Transmission & Distribution

— Designed in 2010.12



Hubei Tongyi Power Technology Co.,Ltd.
Chengnan Industrial Development Zone,
Jinzhou City, Hubei Province, P.R.China.
T: 86-716-8022566
F: 86-716-8022966
<http://www.hbtydq.com>
E-mail: zgztongyi@163.com

Zhejiang Tongyi Power Equipment Co.,Ltd.
Donglian Village, Xietang Town,
Shangyu City,Zhejiang,P.R.China.
T: 86-575-82072584
F: 86-575-82078631
<http://www.zjtongyi.com>
E-mail: tongyi@zjtongyi.com

13 Years' Manufacturing
Designed for 10kV to 110kV



**Power
System**

Tongyi Power® All Rights Reserved

Design

Our Composite Post Insulators are manufactured with these features:

Insulator Core Rod

Tongyi Power applies fiberglass rod (made from imported Glass Fiber and Epoxy Resin by pultrusion) to composite insulators for higher electrical and mechanical performance. FRP Rod is used in composite insulators below 66kV, ECR Rod is used in composite insulators above 66kV.

End Fittings

There are a variety of flanges end fittings made of steel or ductile iron. They are directly crimped to the core rod by a circumferential crimping process, which utilizes the rod's inherent tensile strength to achieve better performance.

Sheds

The sheds are made from high quality HTV silicone rubber, using high pressure injection molding techniques to create a smooth surface. The weathersheds have excellent weather ability, high mechanical strength, anti-tracking, excellent corona resistance, pollution resistance and surface erosion resistance as well as superior Hydrophobicity performance.

Interface

The silicone rubber housing is injection molded onto the rod to create a reliable interface which ensures a permanent bond between the silicone rubber and rods, as well as prevents intrusion of moisture and contaminations.

Leakage Distance

Our composite post insulators feature high leakage distance for maximum resistance to contamination and leakage currents in various environmental applications.

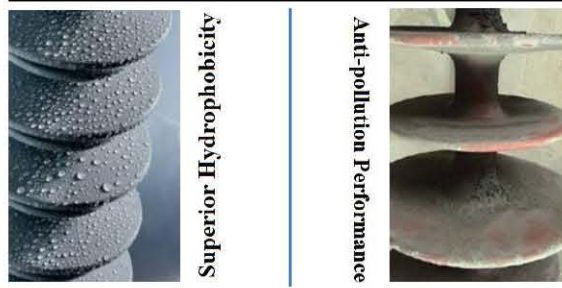
Mechanical Ratings

Specified Cantilever Load (SCL) is the ultimate cantilever strength rating. SCL is identical to the minimum mechanical bending load. Maximum Design Cantilever Load (MDCL) or Working Cantilever Load (WCL) is the maximum continuous cantilever load at which the composite post insulator applies.

Washability

All our composite post insulators are suitable for washing by conventional dry-particle, air-pressure cleaning methods in current use owing to the excellent hydrophobicity performance of the polymer insulators.

Better Materials, Better Design
Better Quality, Better Reliability



Standards

All our polymer post insulators are produced and tested in strict accordance with IEC 61952 and IEC 62231, along with implement of ISO 9001:2008 to control the process and guarantee the quality.

Stamps and Markings

A stamp is made on one end side of the silicone rubber during the injection molding, including details of a logo, manufacturer, date code, SCL in kN and rated voltage ect. Special order requirements can be met by us.

Packaging

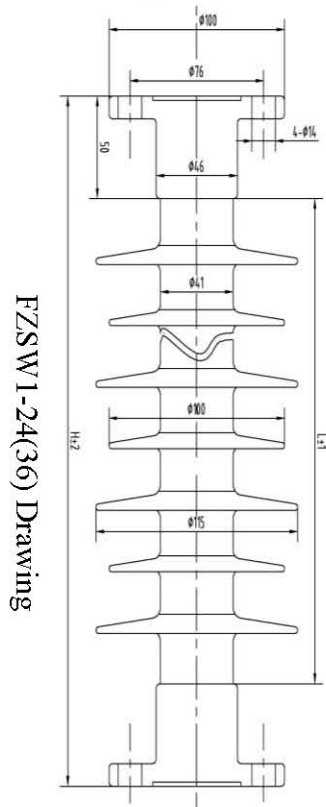
Composite Post insulators are to be packed in the corrugated cartons stacked on a pallet and wrapped with four steel straps.

★ OEM and ODM of different composite insulators from 10kV to 220kV are available.

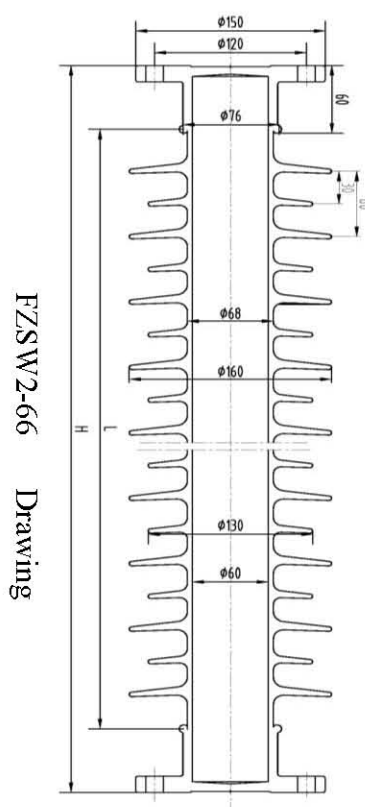


**Power
System**

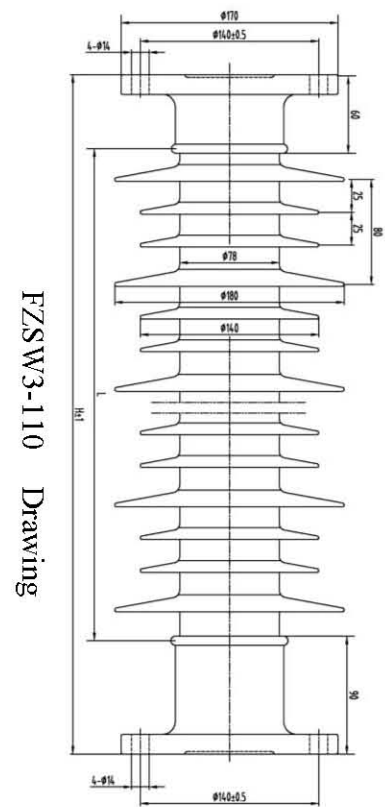
Product Drawings



FZSW1-24(36) Drawing



FZSW2-66 Drawing



FZSW3-110 Drawing

Product Specifications

Model	Rated Voltage	Rated Mechanical bending load	Section Length H	Polymer Length L	Minimum Creepage Distance	Lightning Impulse Withstand Voltage	Power Frequency Withstand Voltage (kV)	
	kV	kN	mm	mm	mm	kV	Dry	Wet
FZSW1-24/5	24	5	286	180	610	150	68	50
FZSW1-24/5	24	5	286	180	610	150	68	50
FZSW1-24/10	24	10	311	220	800	194	140	88
FZSW1-36/3	36	3	410	310	1104	200	100	80
FZSW1-36/2	36	2	410	310	1100	200	100	80
FZSW2-66/12.5	66	12.5	690	540	1660	410	150	135
FZSW2-66/12.5	66	12.5	810	660	2065	430	160	140
FZSW3-110/10	110	10	1150	1010	3550	450	265	185
FZSW3-110/10	110	10	1200	1050	3710	450	265	185
FZSW3-110/10	110	10	1220	1070	3730	450	265	185
FZSW3-110/10	110	10	1500	1350	4700	450	265	185
FZSW3-110/10	110	10	1500	1350	4700	450	265	185

Note: OEM service in accordance with technical requirements are available upon request.

FRP | Polymer Insulator | Fuse Cutout | Switchgear | Power Fitting
Suspension Insulator | Pin Insulator | Post Insulator | Crossarm Insulator | Bushing

Disclaimer

We reserve the right to change the dimensions without notice, the OEM post insulators shall be confirmed in accordance with clients' needs, drawings and requirements of power line systems.



Power System